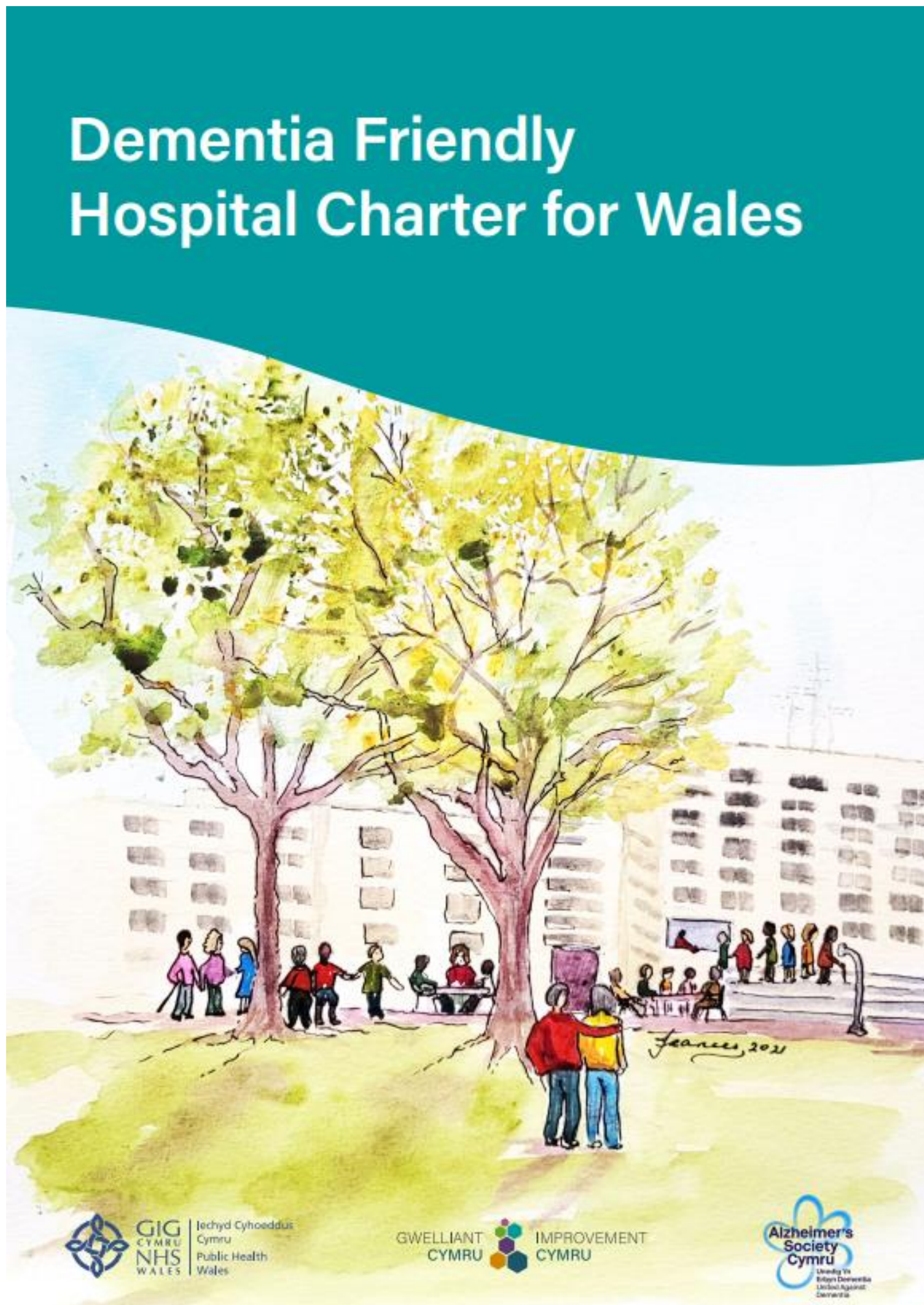


POS2-02 Optimizing Hospital Care for Individuals with Dementia: Challenges, Innovations and Best Practices

By Nigel Hullah: Founder member of Lleisiau Dementia
Contact nigel6859@gmail.com



Dementia Friendly Hospital Charter for Wales

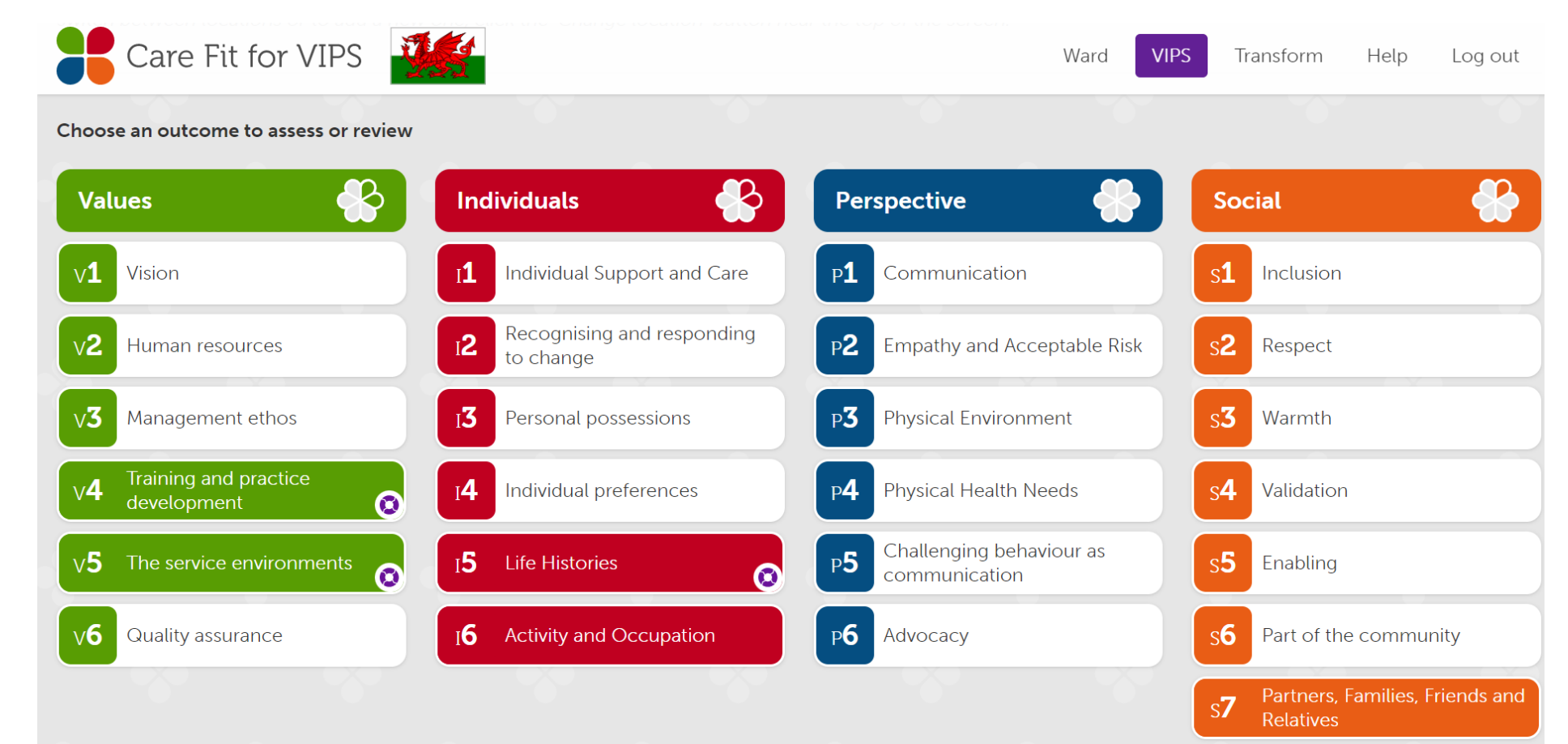
Hospitals are not designed for people living with dementia and as such stays in hospital can lead to decreased independence, loss of skills and poor overall outcomes and experiences. We also know that when people are moved between wards or departments it can add to feelings of disorientation and confusion and impact their progress.

In Wales, the Dementia Friendly Hospital Charter has been coproduced with people living with dementia and using the SPACE principles designed by the RCN for people living with dementia. It sets out a commitment made by all regions in Wales to improve hospital care. This poster will highlight some of the areas that Wales is working on to make hospitals in Wales more dementia friendly.

Person-Centred Care

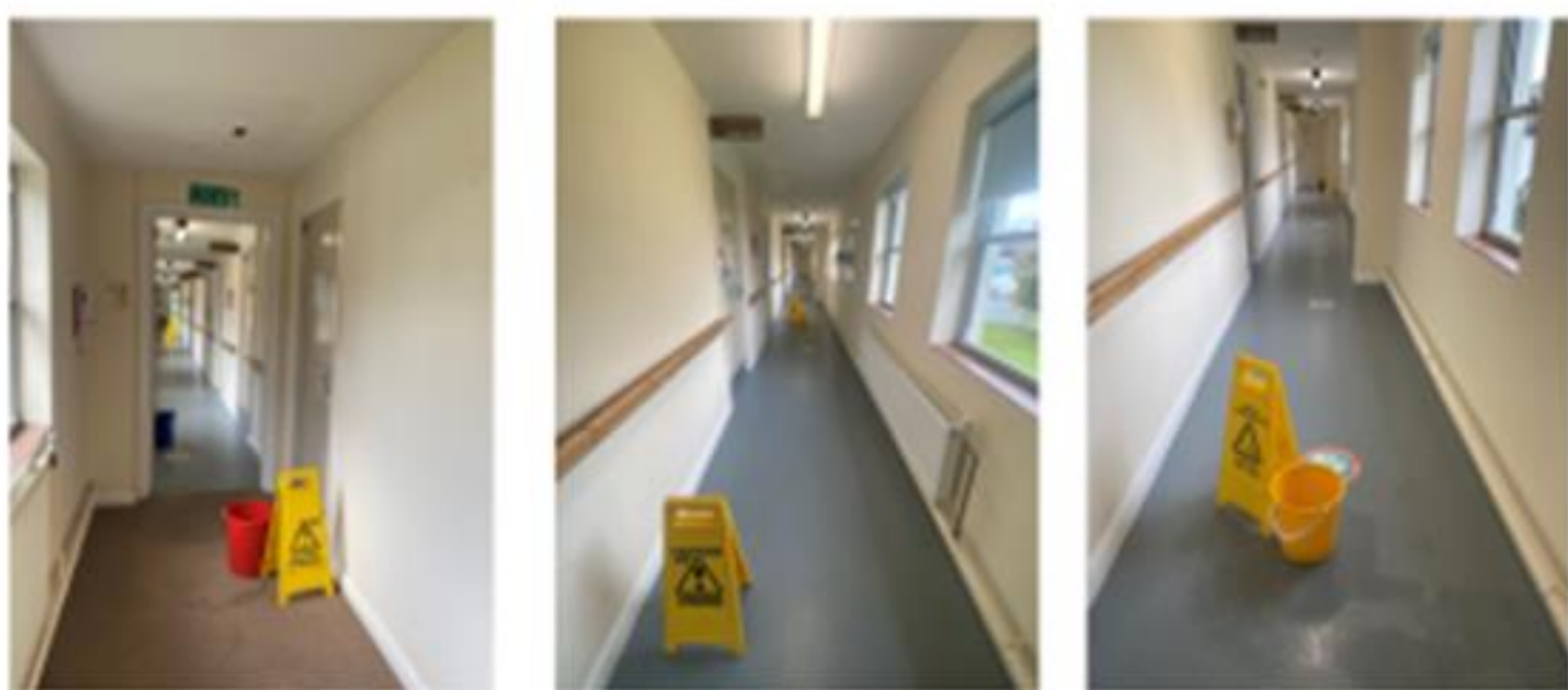
Hospital care is focussed largely on monitoring and completing things in an orderly and predictable manner. This risks the person being seen as a series of tasks that need doing. To promote person centred care for people living with dementia we have launched an online tool called

Care Fit for VIPS (see picture) available to all inpatient areas to assess themselves and design improvement projects to improve care.



Dementia Friendly Environments

The Environment Before



The Environment Now



Signage



Hospitals should strive to make the environment dementia friendly. This includes minimizing noise, providing clear signage and wayfinding aids. Lleisiau Dementia have worked with regions in Wales to assess areas using the Kings Fund environmental audit.

Staff Education and Training



Picture courtesy of Cardiff and Vale Dementia Learning and Development Team

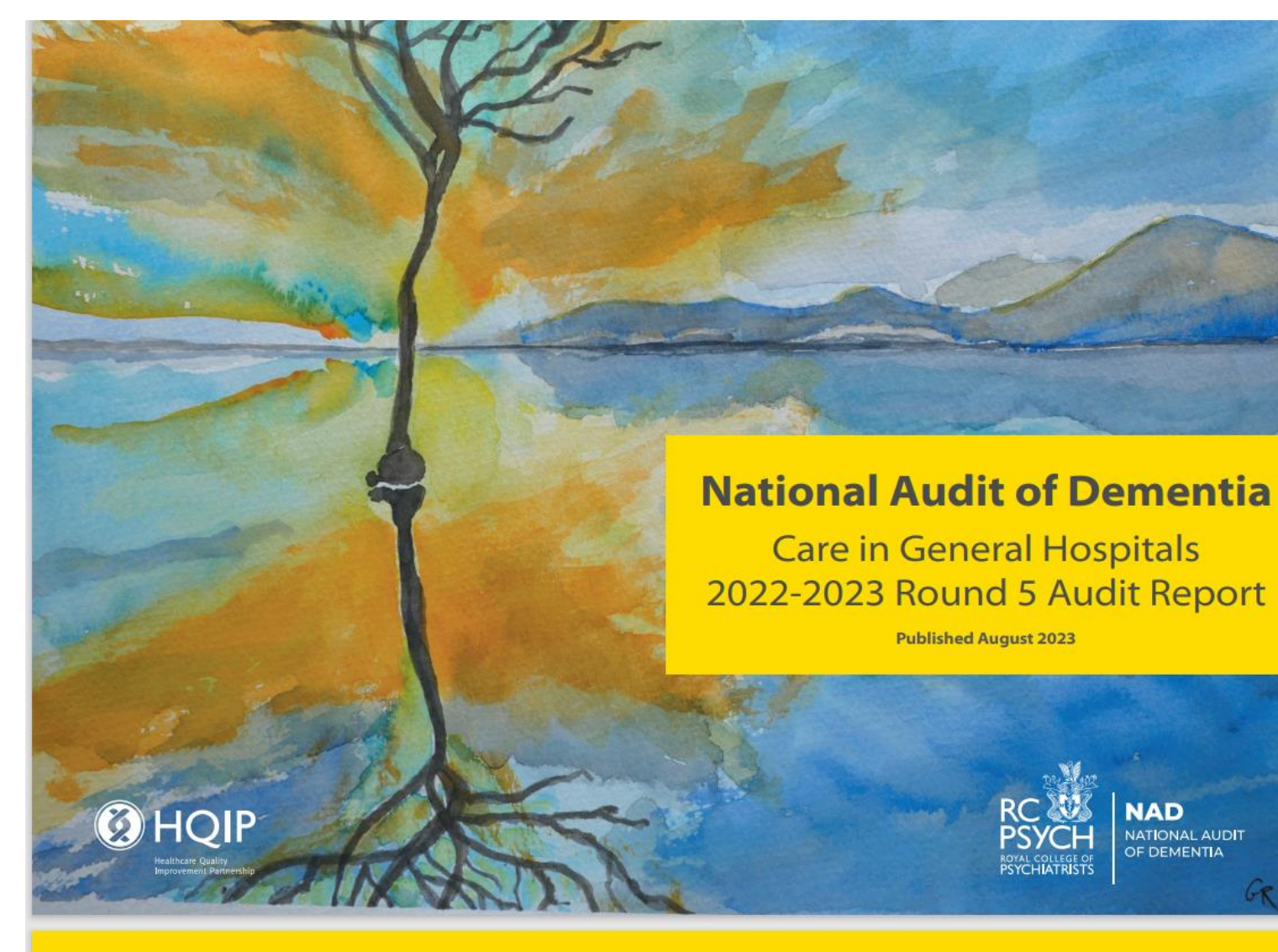
Ongoing education and training programs are vital for equipping hospital staff with the knowledge and skills to provide high-quality dementia care. In addition to our existing offering there has been an increased focus in people living with dementia being involved in designing and delivering education.

Family and Caregiver support



Recognising the important role of family caregivers is vital to improving hospital care. The principles of John's campaign and working in collaboration with family and carers to ensure that people living with dementia have their needs addressed.

Comprehensive assessment and care planning of dementia and delirium



Hospital staff should have the skills and knowledge to understand what is normal and not normal for the person living with dementia. Then to use this information to assess, plan, implement and evaluate care appropriately in relation to both dementia and delirium. The National Audit of Dementia is one way that we are keeping track of improvements in dementia care.

Care planning should be based on best practice and guidance by:

- minimise the use of medication where possible
- creating good sleeping patterns
- helping the individual to settle into the environment
- understand them better using personal information documents such as 'This is me'
- investigate any changes in behaviour to address any problems that may be surfacing